

# MANUFACTURING MAINTENANCE

DEVELOPED IN CONJUNCTION WITH THE  
BLUEGRASS BUSINESS CONSORTIUM



## The Manufacturing Maintenance Technician Certification Program

is designed to provide basic and advanced training for new and existing maintenance personnel. The program is open to everyone, but job expectations and skills will be reinforced by job activities. We recommend a blend of maintenance training and “on the job” work activities for participants to receive the fullest benefits from the program.

The program features **Basic** and **Advanced** Certification. Each certification involves completion of selected technical classes that cover a variety of topics and three modules of foundation classes to provide comprehensive training in basic skills and management tools to complement the technical content of the program. All technical modules stress the four keys of manufacturing maintenance:

1. Safety
2. OSHA
3. Trouble Shooting
4. Preventative Maintenance

### Foundation Modules

<b>Module 1</b> 36 hours	<b>Module 2</b> 36 hours	<b>Module 3</b> 24 hours
Safety	Industrial Math	Problem Solving
Business Economics	Blueprints	Predictive / Preventive
Computer literacy	Interpersonal Communication	Maintenance

### Basic Technical Modules

1—Machine Maintenance (60 hours)	2—Industrial Electricity (45 hours)
3—Electronics/Ladder Logic (36 hours)	4—Welding (84 hours)
5—Machine Shop (60 hours)	6—Fluid Power* (39 hours)
7—Plumbing (36 hours)	8—HVAC (24 hours)

### Advanced Technical Modules (Must complete Basic Class first )

1—Industrial Electricity (45 hours)	2—Electronics/Ladder Logic (45 hours)
3—Welding (168 hours)	4—Machine Shop (60 hours)



EKU IS A TOBACCO—FREE CAMPUS. THE USE  
OF ANY TOBACCO PRODUCT IS PROHIBITED

# FALL 2017 CLASSES

## Basic Fluid Power

**(39 hours)**

*September 5 — October 19, 2017  
(No class October 10, 2017)*

*Tues. & Thurs.*

*3:30 to 6:30 p.m.*

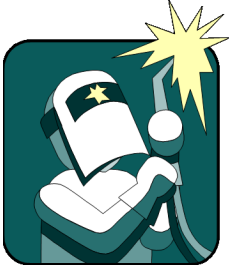
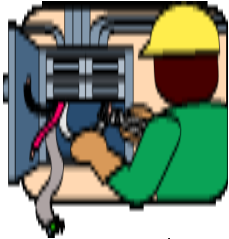
## Basic HVAC

**(24 hours)**

*November 2 — December 12, 2017  
(No class November 14, 16, 21 and 23, 2017)*

*Tues. & Thurs.*

*3:30 to 6:30 p.m.*



For detailed program information or for registration, please contact:

Cheryl Juhasz

Workforce Education Consultant

(859) 622-1164

[cheryl.juhasz@eku.edu](mailto:cheryl.juhasz@eku.edu)

Website: <http://www.workforce.eku.edu/manufacturing-maintenance->

### **Convenient Class Schedule**

Most classes are scheduled on **Tuesday & Thursday** afternoons **3:30 p.m. – 6:30 p.m.**

Sessions last 3 hours per day or 6 hours per week.

Class schedules provide intense training in an environment of continuing education.

Classes are scheduled for approximately 40 weeks per year with winter and summer breaks.

### **Certification Requirements**

#### **Basic Technical Certification**

Successful completion of all 3 Foundation Modules and 6 of the 8 Basic Technical Modules

#### **Advanced Technical Certification**

Successful completion of Basic Certification and 2 of the 4 Advanced Technical Modules

